



Description

Zetechtics have developed a range of battery powered Subsea and Deck Torque Verification Systems.

These allow the ROV operators to prove the accuracy of a torque tool immediately prior to and after operation of a client's valve or actuator.

Features & Benefits

General

- Prove Torque Tool accuracy to clients.
- Battery powered system with 4 digit display.
- Torque reading displayed in either Nm or ftlbs.
- RS232 output of displayed value.
- Stand-alone system, all parts required for operation included. Not dependent on external systems.

Deck Units

- IP65 rated display.
- Can be upgraded to subsea operation.

Subsea Units

- 3000m deep water rated.
- Remote actuator allows zeroing of display.
- Ultra-low power with selectable dormant state.
- Wakened by ROV lighting.
- May be used as a conventional analyser.

The leaders in subsea control

Zetechtics are world leaders in subsea control systems for ROV Intervention tooling to the oil and gas energy markets, providing proven industry solutions many of which are continually working in high integrity applications.

Interface Options

API 17D Classes 1 – 4

The system interfaces to API 17D Classes 1-4 torque tools with 3 different stem sizes.

Size: Interface: 460 x 260 x 214mm
Display: 312 x 350 x 158mm

Torque up to 2,711Nm
Weight: 16.8kg (air), 11.5kg (sea water)
Environmental: -10 to 50°C

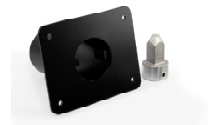


API 17H

The system interfaces to API 17H.

Size: Interface: 345 x 260 x 214mm
Display: 312 x 350 x 158mm

Torque up to 2,000Nm
Weight: 19.0kg (air), 14.9kg (sea water)
Environmental: -10 to 50°C



Petrobras

The system interfaces to Petrobras torque tools with 5 different hexagonal stem sizes.

Size: Interface: 419 x 260 x 214mm
Display: 312 x 350 x 158mm

Torque up to 2,200Nm
Weight: 23.4kg (air), 18.5kg (sea water)
Environmental: -10 to 50°C



Dual / Tri Interface

Cost effective solution as the system is supplied with interface receptacles and sockets for use with two / three different standards of torque tools.

