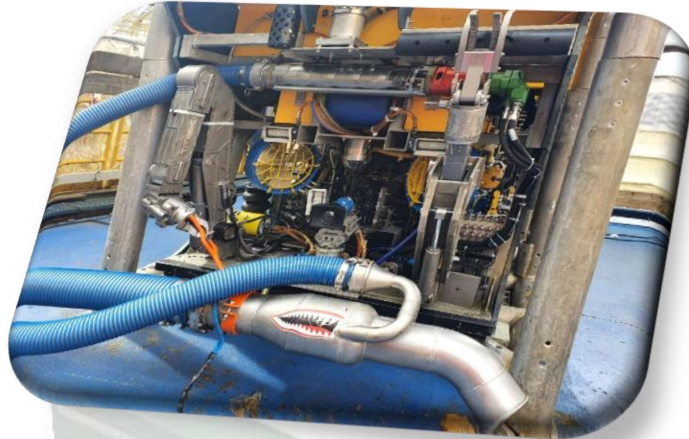


Subsea Tooling Services 6" Piranha Lite Dredger



- Light weight handheld system
- Depth rated to 5000 MSW
- Remotely fed ejector via 4" flexible pipe
- 6" Swivel Exhaust System
- Built in depth compensator
- Water Pump Mounts Within ROV Frame
- Light weight 4 stage pressed stainless steel pump system
- Quick pump coupling for fast re-configuration of the system

Operational Specification

Hydraulic Flow	40* – 80 Litres per minute (* Minimum)
Optimal Hydraulic Pressure	150 – 210 Bar
Gross Water Flow	7500 Litres per minute (Through Ejector)
Removal Capacity Sand m ³ /h (Tons per hour)	50.7 m ³ /h (65 Tons per hour)
Removal Capacity Rocks m ³ /h (Tons per hour)	34.3 m ³ /h (55 Tons per hour) ** Based on a rock size of 50 – 120mm rocks**
Unrestricted Diameter	150mm
Dimensions of Dredger L x W x H x W-Kg (Handheld Ejector)	1115mm x 219mm x 400mm x 25 Kg
Dimensions of Transit Case L x W x H	2450mm x 350mm x 500mm
Hydraulic Hoses Supplied	3 x Certified Hose's 3000mm Long c/w 8 JIC Female Swivel (6 JIC Case)

* Removal capacity is theoretical; removal rates will vary depending on the type of seabed being dredged.

The STS 6" Piranha Lite is Subsea Tooling Services latest design of high-performance dredging equipment.

A lightweight handheld dredger system designed to be fitted to ROV systems with garage / restricted A frames widths where it is not possible to fit tooling to the side or rear of the work class ROV.

The Piranha Lite pump system is mounted externally from the ejector head and feeds the handheld dredger via a flexible 4" hose. The 6" discharge hose is coupled to the rear of the handheld ejector by means of 360-degree swivel, allowing the ejector to move independently from the 6" exhaust hose.

A 6" ROV fish tale handle is provided with the ejector for ease of operation.

