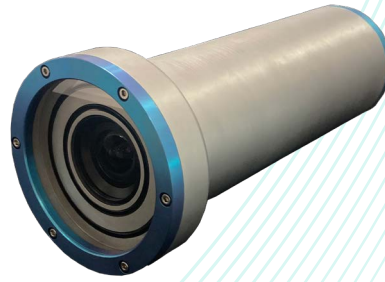




# Technical specification

## ORPHIECAM 3000



### ELECTRICAL

Voltage	12-24V
Power	13W Maximum
Standard Wiring	G55 (Other connector on demand)
Data Transfer/Latency	Ethernet H.264 ≈ 200ms

### OPTICAL & VIDEO

Resolution	HD / 25 fps
FOV (Air/Water)	95°(D) / 82°(H) / 66°(V) 67°(D) / 59°(H) / 48°(V)
Bandwidth	12Mbps

### MECHANICAL

Housing Material	Titanium
Lens Material	Hardened Borofloat
Dimensions (w/o connector)	L = 275mm, Ø=116mm

### MECHANICAL

Depth rating	3000m
Operating temperature	0°C to 45°C

### SOFTWARE

The system is provided with our visualization software ORPHEO which can be used on every Windows computer.

### DESCRIPTION

ORPHIECAM 3000 is based on our new patented algorithms which allows you to see further away in any water in real time.

Our camera is plug&play and will provide you the best images on the market.

ORPHIECAM 3000 is adapted for all underwater inspection for depths up to 3000m.

CONTACT US FOR MORE INFORMATION:

| [contact-orphie@i2s.fr](mailto:contact-orphie@i2s.fr) | +33 (0)6 83 81 94 59 |

| [www.i2s.fr/en/underwater-imaging](http://www.i2s.fr/en/underwater-imaging) |

# STANDARD CAMERA

# ORPHIECAM



PIPELINES



AQUACULTURE



MOORINGS



## BETTER VISIBILITY

Improved spatial acuity (x3)

## ZERO-LATENCY

Realtime on-board processing

## PLUG & PLAY

Easy to use

## BETTER QUALITY

Optimized image enhancement

