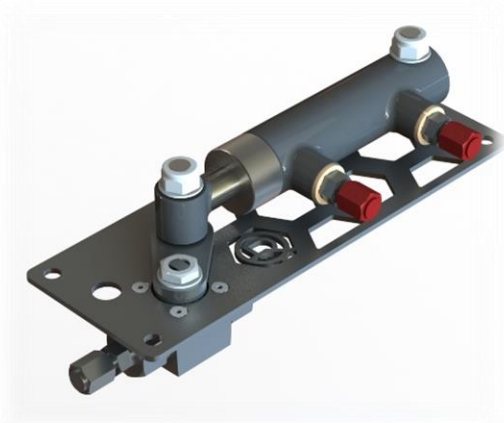


RQ-019 – Hydraulic Operated Ball Valve



Key Features:

- ½", 3/8", ¼" Valves Available as Standard
- Lightweight
- Low Cost

WHATS INCLUDED

Hydraulic Ball Valve.
Operational hoses.
Operations Manual.
Certificate Pack.

OPTIONS

Spares Kit.
Various Valve Sizes.
Alternative Pressure Options.

Description

The Hydraulic Ball Valve utilises a hydraulic cylinder to open and close the ball valve fitted to the tool. This allows the valve to be operated remotely without the ROV manipulators. These are commonly used for pressure testing applications.

The standard valve comes with 4 JIC fittings, 1/4" NPT Female thread, however, different sizes of valve and connections can be fitted as required.

The stainless-steel panel mount allows the tool to be easily fitted to existing equipment. Bespoke panels can be provided to fit as many valve and piston assemblies as required.

RQ-019 – Hydraulic Operated Ball Valve

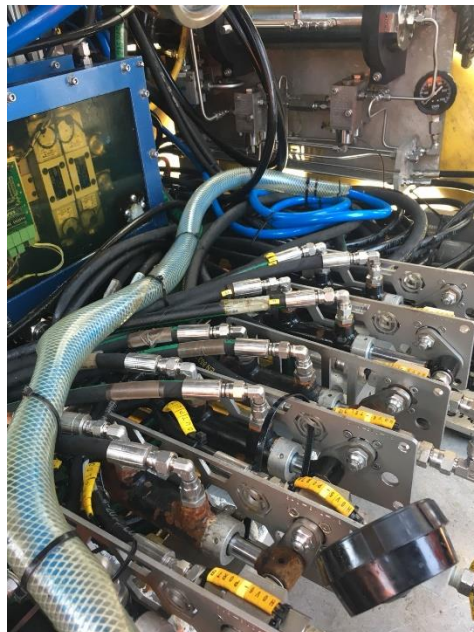
Overall Specifications	
Weight in Air	2.2kg
Weight in Water	1.9kg
Dimensions	L250 x W100 x H87mm
Depth Rating	3000m
Input	
Max Working Pressure	690 Bar (10,000 PSI)
Max Piston Pressure	200 Bar (2,890 PSI)
Hydraulic Connections	
Valve Connections	4 JIC (Standard)
Piston	4 JIC

WHATS INCLUDED

Hydraulic Ball Valve.
Operational hoses.
Operations Manual.
Certificate Pack.

OPTIONS

Spares Kit.
Various Valve Sizes.
Alternative Pressure Options.



The picture on the left show a series of ROVQUIP ball valves being used on an XLX as part of a fluid injection campaign.

Each valve was used to lock in pressure of individual lines as they were being used to pressure test a XT after installation.