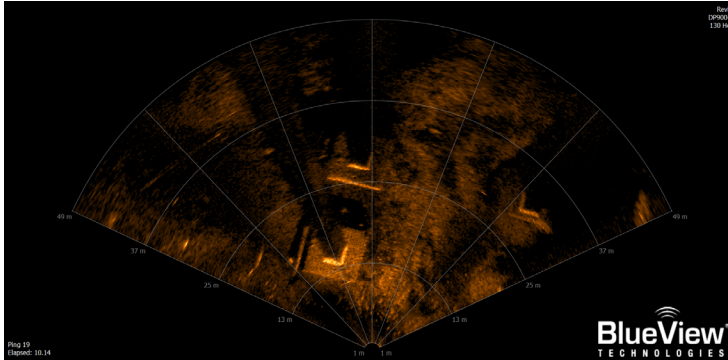


# P900 Series 2D Imaging Sonar

A complete family of high-performance imaging sonar systems engineered for multi-tasking applications and flexible deployment options. These lightweight sonar systems offer real-time, high resolution sonar imagery for object identification, navigation, monitoring, and inspection tasks in a compact design. Choose from five (5) models including two (2) deepwater systems with a maximum detection range of 100 m (328 ft.) and 3 field-of-view options.



Screen capture of the P900-130 showing bridge footers taken from an ROV in motion.

## ProViewer® Software

Delivered with each P900 Series sonar enabling immediate out-of-the-box operation. ProViewer can be installed on to any PC with a Windows® based operating system, no licensing fees required. Features:

- Intuitive, easy-to-use interface
- Crisp, detailed real-time imagery
- On the fly point-to-point measurements
- Video synchronization
- Georeferencing
- Movie exports



## Real-Time Applications

All P900 Series sonar operate while in motion or from a stationary position delivering real-time imagery and data.

- ROV real-time navigation
- Object detection/identification
- Target tracking
- Obstacle avoidance
- Operations monitoring
- Equipment/tool placement
- Area/structure inspection
- Search & recovery

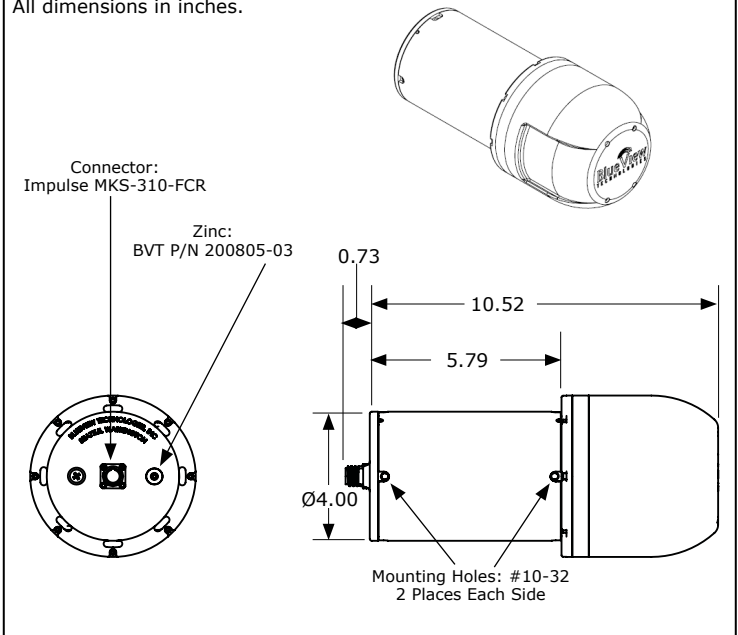
P900-45/P900-90/P900-130



P900-90-D/P900-130-D

## P900-45, P900-90, P900-130

All dimensions in inches.



## Software Development Kit (SDK)

Sold separately the BlueView SDK enables sonar integration into complex platforms and/or customized systems. The SDK enables control of the sonar and provides access to the raw data files to control sonar operation and enable data flow-through. Features:

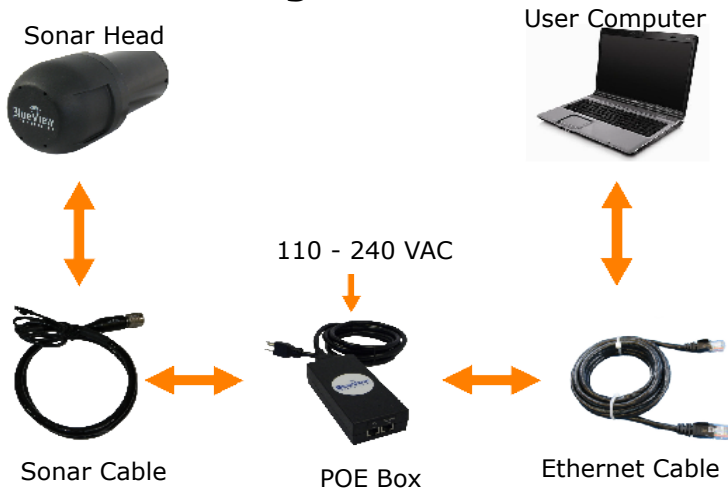
- Single .zip file
- Windows® and Linux versions available
- C/C++ libraries included
- Documentation to review architecture and logic
- Reference manual and step-by-step guide
- Example files
- No licensing fees

## Specifications

Model	P900-45	P900-90	P900-130	P900-90-D	P900-130-D
<b>Sonar</b>					
Operating Frequency	900 kHz	900 kHz	900 kHz	900 kHz	900 kHz
Update Rate	Up to 15 Hz	Up to 15 Hz	Up to 15 Hz	Up to 15 Hz	Up to 15 Hz
Field-of-View	45°	90°	130°	90°	130°
Max Range	100 m (328 ft.)	100 m (328 ft.)	100 m (328 ft.)	100 m (328 ft.)	100 m (328 ft.)
Optimum Range	2 - 60 m (6.5 - 197 ft.)	2 - 60 m (6.5 - 197 ft.)	2 - 60 m (6.5 - 197 ft.)	2 - 60 m (6.5 - 197 ft.)	2 - 60 m (6.5 - 197 ft.)
Beam Width	1° x 20°	1° x 20°	1° x 20°	1° x 20°	1° x 20°
Number of Beams	256	512	768	512	768
Beam Spacing	0.18°	0.18°	0.18°	0.18°	0.18°
Range Resolution	1.0 in.	1.0 in.	1.0 in.	1.0 in.	1.0 in.
<b>Interface</b>					
Supply Voltage	12 - 48 VDC	12 - 48 VDC	12 - 48 VDC	12 - 48 VDC	12 - 48 VDC
Power Consumption	9.0 W/9.5 W max.	18 W/22 W max.	19 W/23 W max.	17 W/23 W max.	17 W/23 W max.
Connectivity	Ethernet/VDSL*	Ethernet/VDSL*	Ethernet/VDSL*	Ethernet	Ethernet
<b>Mechanical</b>					
Weight in Air	5.3 lbs.	5.7 lbs.	5.7 lbs.	9.6 lbs.	9.6 lbs.
Weight in Water	1.3 lbs.	1.4 lbs.	1.4 lbs.	4.4 lbs.	4.4 lbs.
Depth Rating	1,000 m (3,280 ft.)	1,000 m (3,280 ft.)	1,000 m (3,280 ft.)	4,000 m (13,123 ft.)	4,000 m (13,123 ft.)
Size L x W (max OD)	11.3 x 5.0 in.	11.3 x 5.0 in.	11.3 x 5.0 in.	12.4 x 5.0 in.	12.4 x 5.0 in.

\*VDSL- Sonar with the onboard VDSL option will have increased length and weight specifications, contact BlueView for details.

## Standard Configuration



## Deployment Accessories



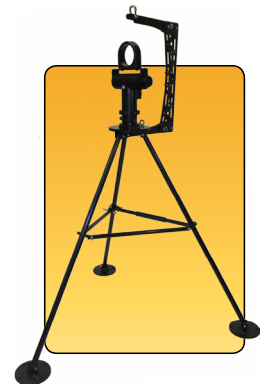
### Manual Pole Mount

Enables quick and easy deployment from a surface vessel or platform, and allows manual tilt angle adjustments of the sonar head.



### BV3100 Portable Boat Mount System

Ideal for search and recovery operations, dive monitoring, and underwater inspections with digitally controlled pan and tilt.



### BV4000 Portable Tripod with Digital Pan & Tilt

Lightweight, one-man deployable for stationary positioning of the sonar with digital control of angle and rotation.

## Ordering Information

When requesting a quotation or placing an order use the configuration model below to specify your exact model:

**P900 - 130 - BR - VDSL**

#### Field-of-View

**45:** 45° Nominal

**90:** 90° Nominal

**130:** 130° Nominal

#### Connector Type

**MKS:** Impulse MKS 10 pin<sup>1</sup>

**BR:** Burton Mini 8 pin

**SN:** Schilling SeaNet

#### Options

**D:** 4,000 m depth

**VDSL:** Embedded Ethernet extenders<sup>2</sup>

Choose your Field-of-View, Connector Type, and Options, then place your request using your configuration model code.

## BlueView Technologies, Inc.

2151 N. Northlake Way, Suite 214

Seattle, WA 98103 USA

P +1 (206)545-7260 • F +1 (206)545-7261

info@blueview.com • www.blueview.com