

# 1007 Series Altimeter

P/N 974-70130000

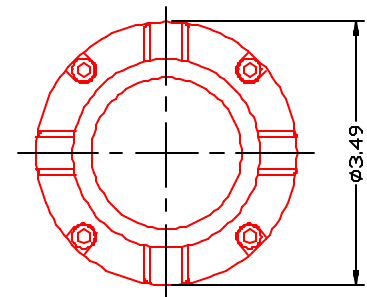
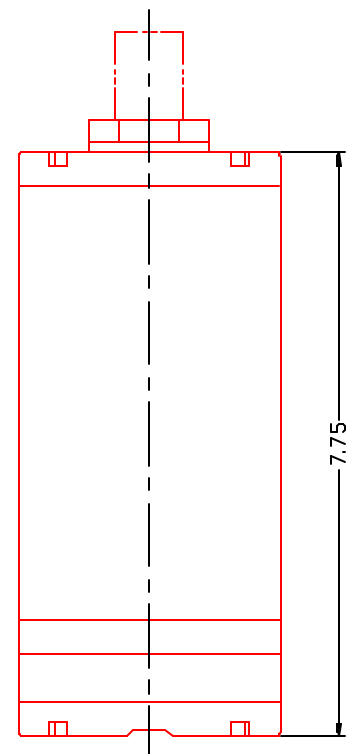


KONGSBERG

The 1007 digital altimeters are small, light weight and designed for deep ocean applications, where dimensions and weight are key equipment selection factors.

The 1007 altimeter is ideally suited to applications such as: positioning, berthing, height above seabed, and below surface monitoring.

|                                      |   |
|--------------------------------------|---|
| Operating Frequency:                 | 200 kHz   |
| Beam Width:                          | 10° nominal   |
| Minimum Range: <sup>2</sup>          | Adjustable, limited by pulse length                             |
| Maximum Range: <sup>2</sup>          | Adjustable, < 500 M, 300 M usable                               |
| Output Resolution: <sup>2</sup>      | Adjustable, > 2.4mm   |
| Transmit Pulse Widths: <sup>2</sup>  | Adjustable, 20 to 1000 µS                                       |
| Repetition Rate:                     | limited by range and resolution                                 |
| Assumed speed of sound: <sup>2</sup> | Adjustable, 1400 to 1600 M/S                                    |
| Receive Bandwidth:                   | 20 kHz max  |
| Operating Mode: <sup>1</sup>         | Configurable, 807, 809 or MS1000                                |
| Serial Interface: <sup>2 3 4</sup>   | RS232C or RS485   |
| Downlink Baud Rate:                  | 9600 bps  |
| Uplink Baud Rate:                    | 9600 bps, adjustable in MS1000 mode                             |
| Hold-off                             | Via serial command  |
| Synchronization:                     |   |
| Aux. Analog Output: <sup>1</sup>     | Configurable, 0-5V or 0-10V                                     |
| Power Requirement:                   | +22 to +26 Vdc @ 1.8A startup, 250 mA continuous                |
| Temperature Range:                   | -10 to +50°C operating<br>-30 to +50°C storage                  |
| Operating Depth:                     | 3000m   |
| Connector:                           | Seacon XSG-6-BCL  |
| Materials:                           | Alum 6061-T6, 300 Series S.S., PVC, Epoxy                       |
| Finish:                              | Anodize, Black MIL-A-8625 type II                               |
| Dimensions: (3000m)                  | Length 7.75 "/197mm (excludes connector)<br>Diameter 3.49"/88mm |
| (Est.) Weight:                       | Air 5.2 lbs./2.4 kg<br>Water 2.4 lbs/1.1 kg                     |



- <sup>1</sup> configurable
- <sup>2</sup> configurable in 807 mode
- <sup>3</sup> configurable in 809 mode

Specifications subject to change without notice  
974-70137901 Iss 1.0

KONGSBERG MESOTECH LTD. 1598 Kebet Way, Port Coquitlam B.C. Canada V3C 5M5  
Tel: (604) 464 8144 Fax: (604) 941 5423

- <sup>4</sup> auto-detect in MS1000 mode
- \* configurable settings require ALTCONFIG software

Specifications subject to change without notice  
974-70137901 Iss 1.0

**KONGSBERG MESOTECH LTD. 1598 Kebet Way, Port Coquitlam B.C. Canada V3C 5M5**  
**Tel: (604) 464 8144 Fax: (604) 941 5423**