

Digital Edge Subsea

Digital Video Inspection Systems

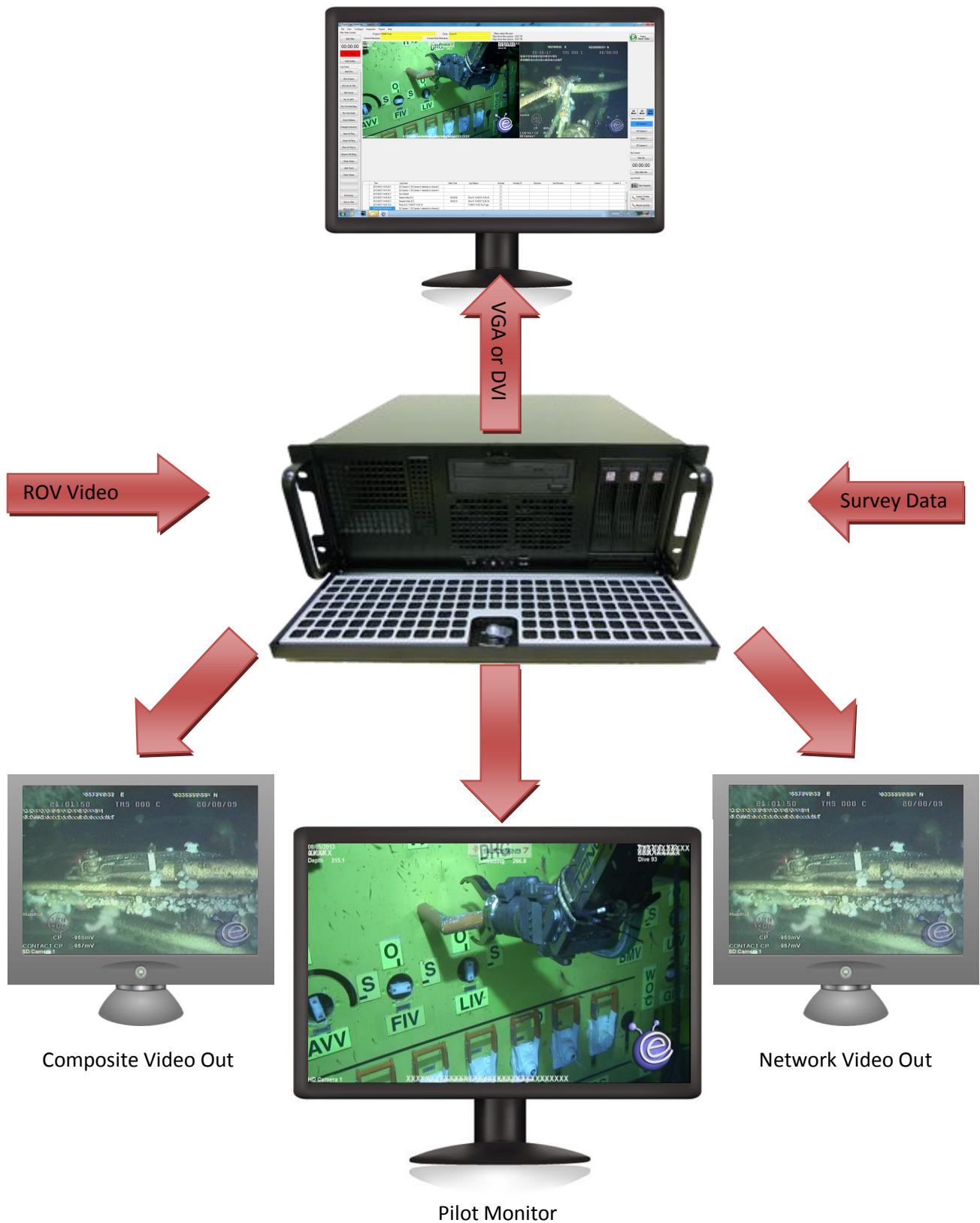


Product Catalogue

Contents

1	EdgeDVR Overview	3
2	Products	5
2.1	EdgeDVR1SD Single Channel Recording	5
2.2	EdgeDVR2SD – Dual Channel Recording	6
2.3	EdgeDVR4SD – Quad Channel Recording	7
2.4	EdgeDVR1HD1SD – Single Channel Recording.....	8
2.5	EdgeDVR1HD2SD – Dual Channel Recording.....	9
2.6	EdgeDVR1HD4SD – Quad Channel Recording	10
2.7	EdgeTouch	11
2.8	EdgeStore	12
2.9	EdgeInspect	13
3	Comparison Chart.....	14

1 EdgeDVR Overview



The EdgeDVR records video from the ROV or Diver and displays this on a standard VGA/DVI Monitor. Video complete with overlay and be exported via BNC, HD-SDI (HD Only) and local network (LAN).

The EdgeDVR inspection system has been developed to be used by personnel, with all levels of experience, when completing visual inspections on subsea structures, which require real time event logging.

The EdgeDVR is a one stop DVR inspection unit which includes inbuilt digital overlay.

Edge DVR Products –

Standard Definition – **EdgeDVR1SD** – Single Channel Recording

EdgeDVR2SD – Dual Channel Recording

EdgeDVR4SD – Quad Channel Recording

High Definition - **EdgeDVR1HD1SD** – Single Channel Recording

EdgeDVR1HD2SD – Dual Channel Recording

EdgeDVR1HD4SD – Quad Channel Recording

The EdgeDVR has a unique inspection data storage system. Automatic user defined folders are created when components are entered into a structure browser.

The EdgeDVR is a 4U 19inch rack mounted unit with 9TB of storage. The unit has three removable hard drives which are for survey video, anomaly video clips; excel logs, photos and blackbox video.

A solid state hard drive is used for the internal operation of EdgeDVR.

The EdgeDVR has inbuilt automatic data backup using a proprietary data file management concept. A copy of all the data gathered from inspections is held on both 3TB hard drives.

The blackbox 3TB hard drive automatically records all of your active channels, as soon as a project has started.

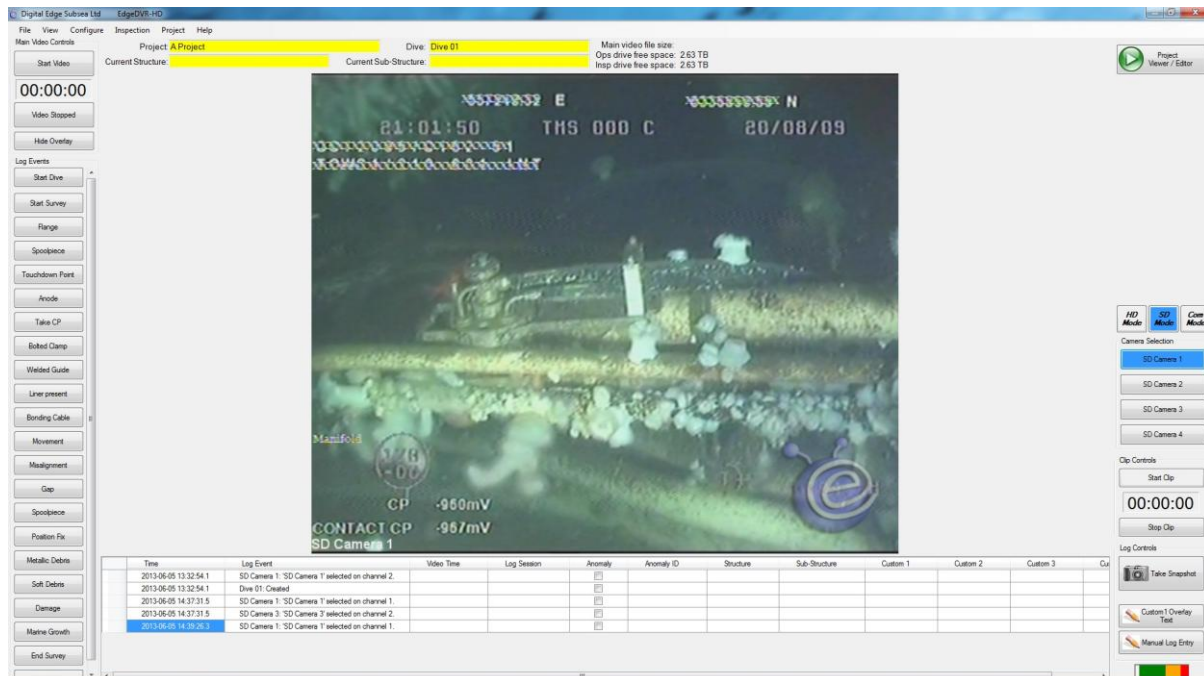
The client deliverable is a single folder, this folder contains the complete project video, photos, logs and a client viewer.

A Composite video output is available via a video breakout cable supplied. This output can be configured to output any of the active video channels.

The high definition systems have a HD-SDI loop though for the camera and a dedicated HD-SDI output, complete with overlay.

2 Products

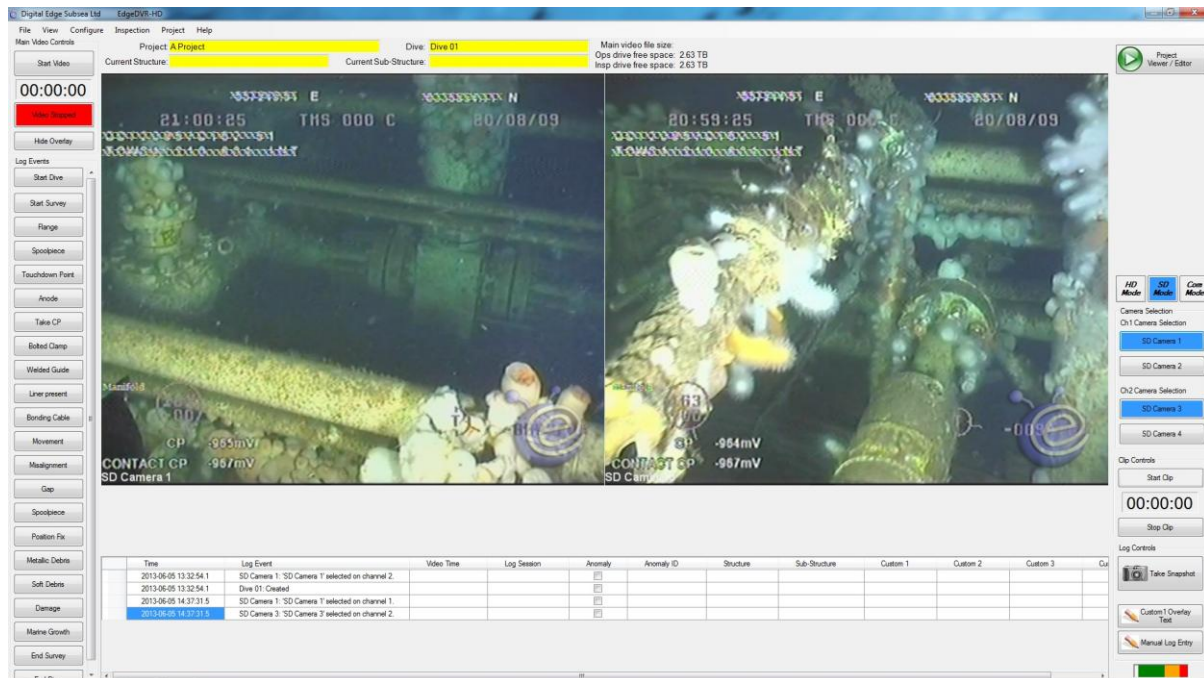
2.1 EdgeDVR1SD Single Channel Recording



Main Features –

- Standard Definition Digital Video Recording (WMV)
- Digital Overlay
- Realtime Eventing
- Built-in 4 Way Video Switcher
- Digital Stills (Jpeg or Bitmap)
- Video Clips (WMV)
- Automatic dive, photo, video and anomaly logs
- Project Editor
- Client Viewer
- Realtime data logging
- 4 Serial ports for the display/logging of data
- 3 x 3Tb Removable Hard Drives
- Automatic Blackbox Recording
- Solid state operating system drive

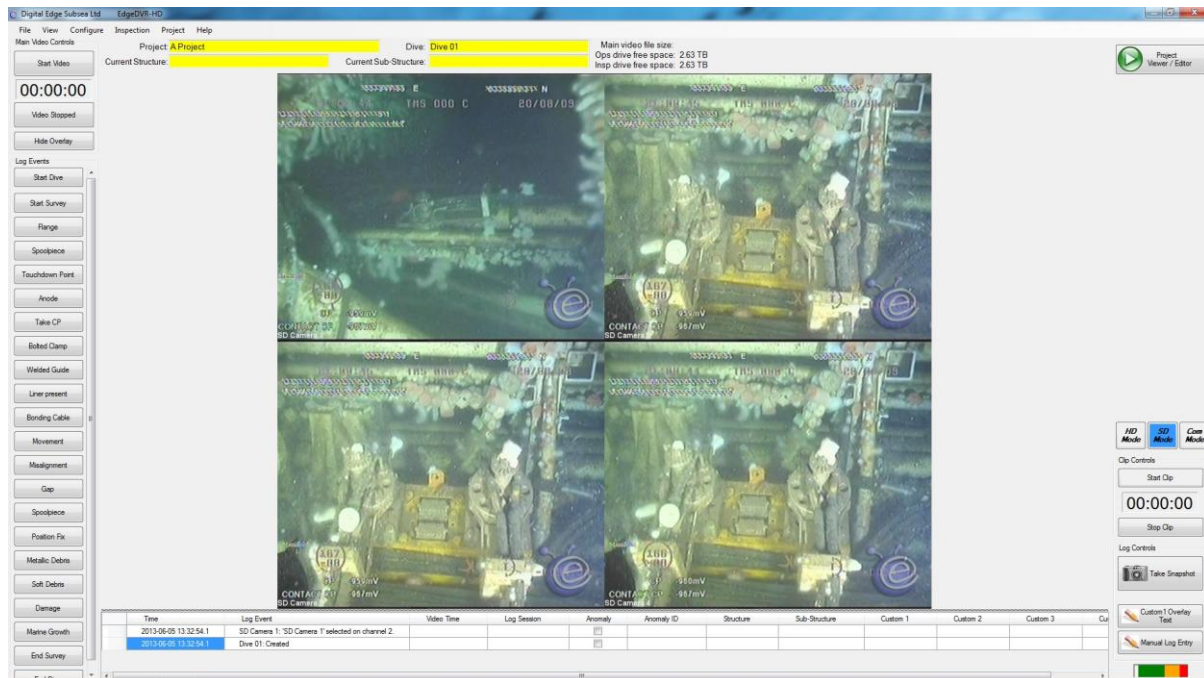
2.2 EdgeDVR2SD – Dual Channel Recording



Main Features –

- Standard Definition Digital Video Recording (WMV)
- Single or Dual Channel Recording Modes
- Independent Dual Channel Digital Overlay
- Realtime Eventing
- Built-in 4 Way Video Switcher
- Digital Stills - Single or Dual Channel (Jpeg or Bitmap)
- Video Clips (WMV)
- Automatic dive, photo, video and anomaly logs
- Project Editor
- Client Viewer
- Realtime data logging
- 4 serial ports for the display/logging of data
- 3 x 3Tb Removable Hard Drives
- Automatic Blackbox – Single or Dual Channel Recording
- Solid state operating system drive

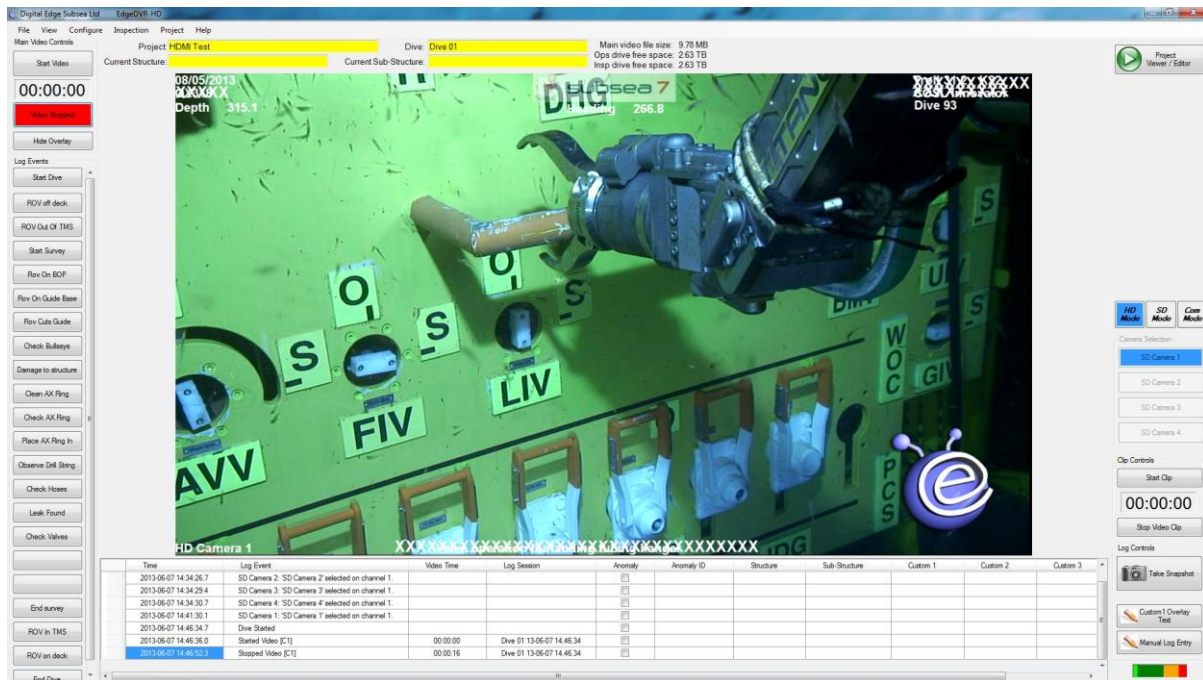
2.3 EdgeDVR4SD – Quad Channel Recording



Main Features –

- Standard Definition Digital Video Recording (WMV)
- Single, Dual, Triple & Quad Channel Recording Modes
- Independent Quad Channel Digital Overlay
- Realtime Eventing
- Built-in 4 Way Video Switcher
- Digital Stills - Single, Dual, Triple & Quad (Jpeg or Bitmap)
- Video Clips (WMV)
- Automatic dive, photo, video and anomaly logs
- Project Editor
- Client Viewer
- Realtime data logging
- 4 Serial ports for the display/logging of data
- 3 x 3Tb Removable Hard Drives
- Automatic Blackbox - Single, Dual, Triple & Quad Channel Recording
- Solid state operating system drive

2.4 EdgeDVR1HD1SD – Single Channel Recording



Main Features –

- High or Standard Definition Digital Video Recording (WMV)
- Digital HD Overlay
- Realtime Eventing
- Built-in 4 Way Video Switcher (SD)
- HD/SD Digital Stills (Jpeg or Bitmap)
- Video Clips (HD or SD)(WMV)
- Automatic dive, photo, video and anomaly logs
- Project Editor
- Client Viewer
- Realtime data logging
- 3 serial ports for the display/logging of data
- 3 x 3Tb Removable Hard Drives
- Automatic Blackbox Single Channel (HD or SD) Recording
- Solid state operating system drive

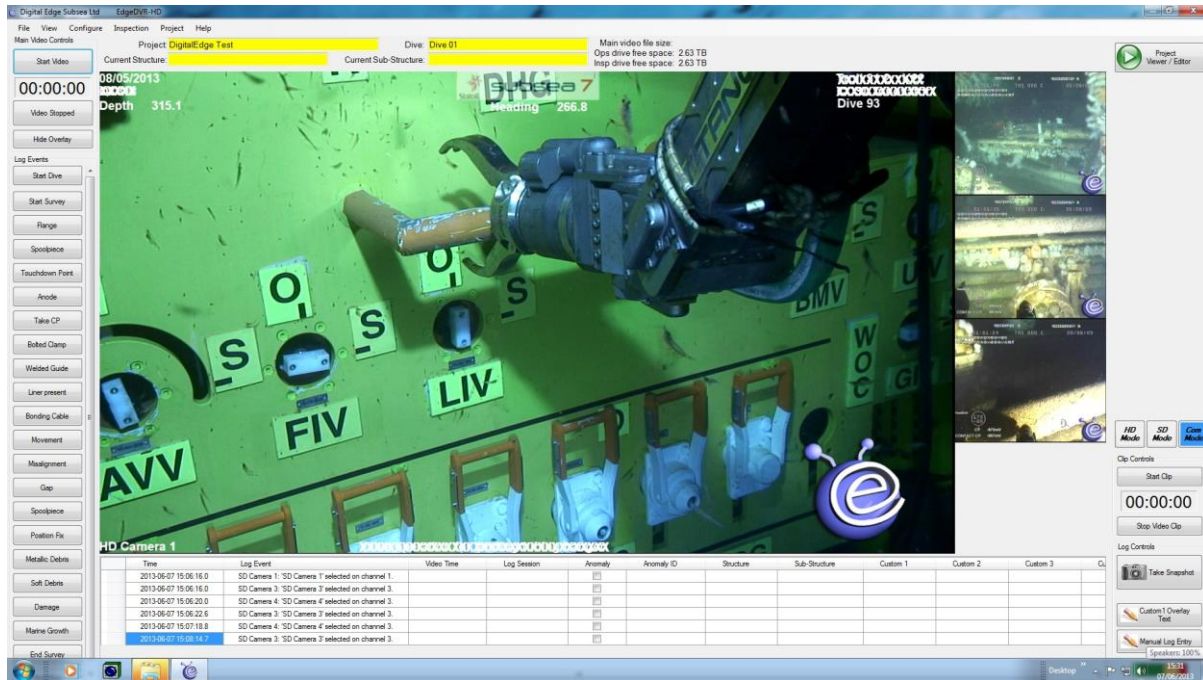
2.5 EdgeDVR1HD2SD – Dual Channel Recording



Main Features –

- **Combined High & Standard Definition Digital Video Recording (WMV)**
- **HD, SD or Combined Recording Modes**
- **Independent Dual Channel Digital Overlay (HD/SD)**
- **Realtime Eventing**
- **Built-in 4 Way Video Switcher (SD)**
- **HD/SD Digital Stills (Jpeg or Bitmap)**
- **Video Clips (Dual Channel HD & SD)(WMV)**
- **Automatic dive, photo, video and anomaly logs**
- **Project Editor**
- **Client Viewer**
- **Realtime data logging**
- **3 serial ports for the display/logging of data**
- **3 x 3Tb Removable Hard Drives**
- **Automatic Blackbox Dual Channel (HD & SD) Recording**
- **Solid state operating system drive**

2.6 EdgeDVR1HD4SD – Quad Channel Recording



Main Features –

- Combined High & Standard Definition Digital Video Recording (WMV)
- HD, SD or Combined Recording Modes
- Independent Quad Channel Digital Overlay (HD/SD)
- Realtime Eventing
- Built-in 4 Way Video Switcher (SD)
- HD/SD Digital Stills (Jpeg or Bitmap)
- Video Clips (Quad Channel HD & SD)(WMV)
- Automatic dive, photo, video and anomaly logs
- Project Editor
- Client Viewer
- Realtime data logging
- 4 Serial ports for the display/logging of data
- 3 x 3Tb Removable Hard Drives
- Automatic Blackbox Quad Channel (HD & SD) Recording
- Solid state operating system drive

2.7 EdgeTouch



Main Features –

- **8" Touchscreen for use with the EdgeDVR Inspection System**
- **Video Controls - Start/Pause/Stop Recording Video**
 - Start/Pause/Stop Recording Video Clips
 - Take Photos, with auto-naming.
 - DVR Mode Selector
 - Camera Switcher
- **Log Buttons – Simple Hot Key Eventing**
- **Workpack – Change Component Groups and Components.**

Video Controls	Log Buttons	Workpack
Pause Video	00:01:02	
Stop Video		
Hide Overlay	End Video Header	
Start Clip	00:00:00	
Stop Video Clip		
Take Snapshot		
Video Mode HD Mode SD Mode		
Camera Selection SD Camera 1 SD Camera 2 SD Camera 3 SD Camera 4		
Enable Fullscreen		

Video Controls	Log Buttons	Workpack
Last Log Event: Centralising Wedge		
30/01/2014 17:15:08		
Start Dive	Start Survey	
Take CP	Damage	
Metallic Debris	Soft Debris	
Hard Debris	Buried	
Bare Metal	Conductor Guide Frame	
Centralising Wedge	Movement	
Corrosion	Anode	
Marine Growth	Pile Sleeve	
Mudmat	Scour	
Conductor	Node	
End Survey	End Dive	

Video Controls	Log Buttons	Workpack
A Platform		
+	Conductors	
-	J Tubes	
	J1	
	J2	
	J3	
	J4	
-	Members	
	M1	
	M2	
	M3	
	M4	
-	Risers	
	R1	
	R2	

2.8 *EdgeStore*



Main Features –

- **Pelicanase storage for up to 6 x HDD Drives**
- **Supplied with 6 x 3TB HDD's as standard.**
- **Bay USB to SATA Dock.**

The EdgeStore enables the user to safely transfer data from the EdgeDVR to an external PC.

Data on an EdgeDVR is stored in 3 hard drives, operations, inspections and blackbox.

The data can then be downloaded to an office PC for archive purposes.

Within the EdgeStore Kit, the 2 bay Sata to USB is used as an easy, simple interface to enable this transfer.

The Pelicanase also has storage for up to 6 hard drives, it comes complete with 6 x 3TB drives

2.9 *EdgeInspect*



Main Features –

- **Pelicans storage for up to 6 x HDD Drives**
- **Supplied with 6 x 3TB HDD's as standard.**
- **4 Bay USB to SATA Dock.**

The EdgeInspect enables the user to safely transfer data from the EdgeDVR to an external PC.

Data on an EdgeDVR is stored in 3 hard drives, operations, inspections and blackbox.

The data can then be downloaded to an office PC for archive purposes.

Within the EdgeInspect Kit, the 4 bay Sata to USB is used as an easy, simple interface to enable this transfer.

The Pelicans also has storage for up to 6 hard drives, it comes complete with 6 x 3TB drives.

3 Comparison Chart

Model	SD Channels Recording	HD Channels Recording	Combined HD & SD Recording	Blackbox	Auto Logs	Video Clips	Video Stills	Serial Ports	USB 3.0 Ports	USB 2.0 Ports	VGA	DVI
EdgeDVR 1SD	1	X	X	√	√	√	√	4	6	4	1	1
EdgeDVR 2SD	2	X	X	√	√	√	√	4	6	4	1	1
EdgeDVR 4SD	4	X	X	√	√	√	√	4	6	4	1	1
EdgeDVR 1HD-1SD	1	1	X	√	√	√	√	3	6	4	x	2
EdgeDVR 1HD-2SD	2	1	3	√	√	√	√	3	6	4	x	2
EdgeDVR 1HD-4SD	4	1	4	√	√	√	√	3	6	4	X	2