



DIGITAL EDGE SUBSEA

Digital Video Inspection Systems

EdgeDVR 1HD2SD

The EdgeDVR 1HD2SD is a complete digital video inspection system.

Developed to be used by personnel with all levels of experience, when completing visual inspections on subsea structures which require real time event logging.

The EdgeDVR 1HD2SD unit includes:-

- Single Channel High Definition or Dual Channel Standard Definition digital video recording (2 x 3TB Storage). Various formats, 1080i / 720p, 576 etc.
- Combined Mode Recording Single Channel HD & Single Channel SD
- Automatic Single Channel HD/ Dual Channel SD Blackbox video recording (3TB Storage).
- Digital overlay c/w variable transparent logos and fields.
- Full HD video stills and video clips.
- Automatic generation of dive, photo, video and anomaly logs.

The EdgeDVR 1HD2SD is a 4U rack-mounted unit with a total storage capacity of 9TB.

The system has 3 removable hard drives, which store the survey video, anomaly clip video, photos and all logs.

The operating system is stored on a solid state hard drive for increased reliability.

The EdgeDVR 1HD2SD system has inbuilt automatic data backup using a proprietary data file management concept. A copy of all data from the inspection is stored on two removable 3TB hard drives.

The third removable drive is used to store HD/SD Blackbox video and can also store video from third party inspection programs, COABIS & Nexus.

19" 4U Rackmounted Video Inspection System

HD-SDI High Definition Video Input

Quad Switchable SD BNC Composite Video Inputs

Automatically generates dive, video, video stills and anomaly logs in Excel format

Customizable fields to add extra data into logs

HD/SD Inspection Editor, to view and delete inspection data and monitor inspection progress.

Standalone workpack generation and import workpack to the EdgeDVR.

Hot key to instantly switch overlay on/off

"On the Fly" Simple Overlay Entry

Seamless user configurable digital video header

3 serial inputs for displaying data via overlay. i.e. GPS, Aux compass

Automatic backup of data

HD/SD Video stills, automatically added to the photo log

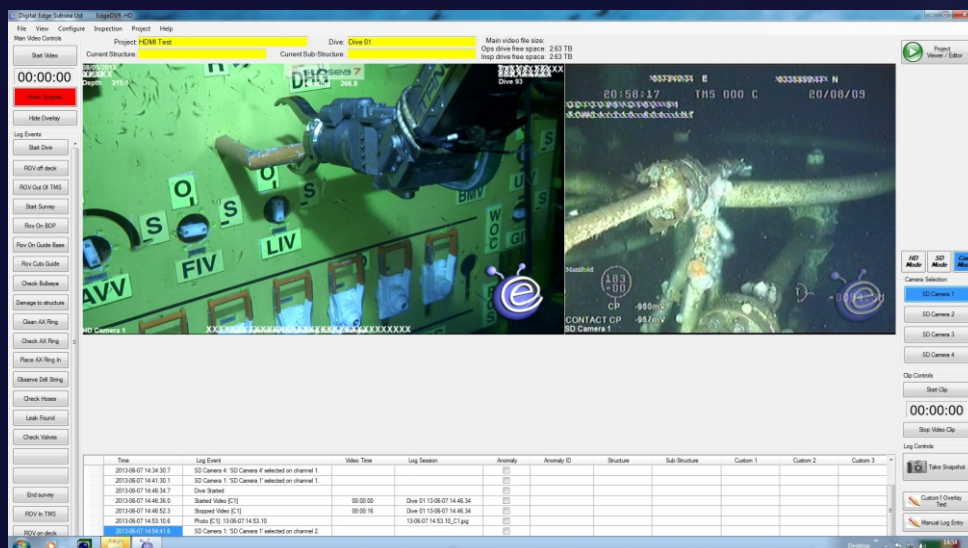
Independent HD/SD video anomaly clips

Simple Manual Log entry

20 User Configurable Hotkeys

Sequential dive numbering

HD/SD Multi Channel Network Video Streaming Via LAN





DIGITAL EDGE SUBSEA

Digital Video Inspection Systems

EdgeDVR 1HD2SD



19" 4U Rack Mounted Inspection System

Front panel of the EdgeDVR 1HD2SD

Protected by a hinged lockable lid

3 removable 3TB hard drives, front mounted.

Two front mounted USB ports

Blu-ray DVD writer

Two cooling fans

Power indicators

Rear panel of the EdgeDVR 1HD2SD

Four Composite 75ohm BNC video connections (switchable)

HD-SDI Inputs/Outputs c/w Overlay

3 x 9 pin serial inputs for survey/rov data

DVI-D, DVI-A and HDMI Monitor Outputs

Six USB 3.0 Ports

Four USB 2.0 Ports

Dual Gigabit LAN

Single Composite Video Output (SD)

Keyboard/Mouse Inputs

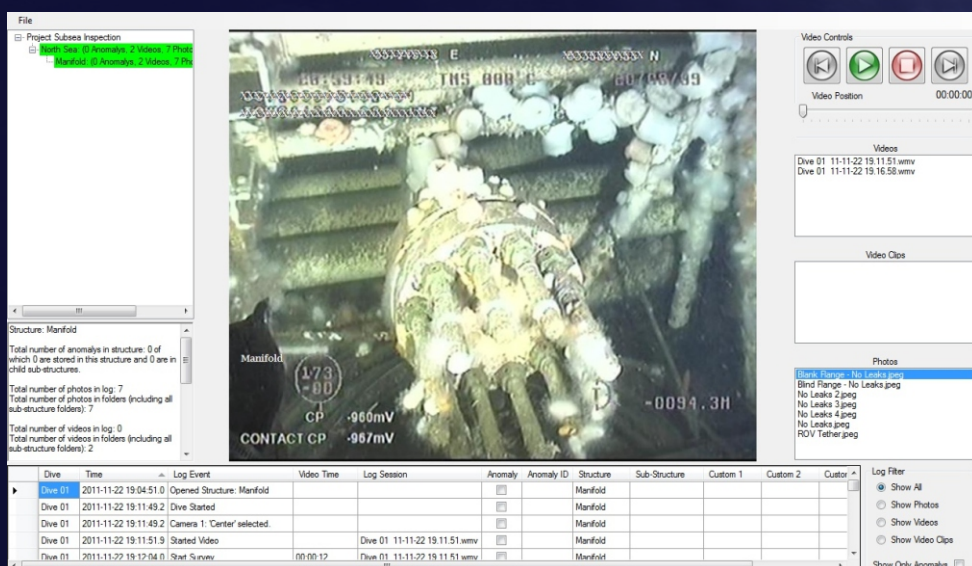
Microphone Input

Speaker Output

Two cooling Fans

The client deliverable project file contains our own client viewer, this allows the client to view the logs, photos and videos (HD&SD) on any computer.

The logs can be filtered to show, videos, photos and anomalies. The viewer is free and is available on all systems.



Digital Edge Subsea Ltd
Doubletree Court
Cavendish St
Ulverston, UK.

01229 206456
www.digitaledgesubsea.com

